

The Hub of Railroad Vision



The Korea Railway Association



Woosong University
College of Railroad & Logistics

Welcome to the College of Railroad & Logistics at Woosong University

CONTENTS

Greetings from the President	03
History	04
Department of Railroad Management	05
Department of Transport & Logistics	06
Department of Railroad Electrical System Engineering	07
Department of Railroad Civil System Engineering	08
Department of Railway Vehicle System Engineering	09
The Professorate of College of Railroad & Logistics	10
Government Sponsored Railroad Professionals Cultivation Project	12
Railroad Specialization Graduate School	14
Railroad Specialization University	16
International Co-operations	19
Industrial – Educational Cooperation	20



Welcome to the College of Railroad & Logistics at Woosong University

In recent years, the infrastructure and investment towards the railroad industry in Korea have made extensive developments. Along with the launching of the fourth fastest speed rail (at 300 km/hr) in 2004, Korea has laid down a nationwide KTX rail network which allows arrival at destination within 90 minutes. The revitalization of railroad developments has brought new opportunities to the traffic culture and lifestyle standards. In 2012, Korea's new generation of high speed trains, the HEMU (at 420 km/hr), has been successfully tested, and once again proves the excellence of Korea's railroads in the world market. As Korea meets the active era of railroad construction such as Trans Korea Railroad, Transcontinental railroads, High-Speed Railways and Maglev railways, the cultivation of future global leaders for railroad engineering is becoming more and more important.

Woosong University is located in Daejeon City, which is the heart of technology, education and transportation in Korea. The two main railway construction and operation institutions of Korea Rail Network Authority and Korail are all located in Daejeon City. Thus, Daejeon is a strategic point in terms of the geographical location and opportunities to develop railway infrastructure and cultivate professional railroad talents. Woosong University has close-knit co-operations with the two major institutions, Korea Railroad Corporation and Korea Rail Network Authority which will encourage the development of railroad specialty manpower. Woosong's College of Railroad & Logistics has gained several recognitions for shaping talented railroad professionals in both academic and research areas. Examples of such recognitions include the New University for Regional Innovation (NURI) award by the Ministry of Education in 2004, the Next-Generation High Speed Train Project award from the Ministry of Land, Infrastructure and Transport (MOLIT) in 2007, the accreditation of the education institution for locomotive engineers from MOLIT in 2009, the LINC award from the Ministry of Education in 2012, and the CK-1 award for special professions from the Ministry of Education in 2015. Such merits are clear evidence of the supremacy of railroad developments by Woosong University.

At the same time, Woosong's College of Railroad & Logistics has formed close relationships with popular railroad schools worldwide, such as Soochow University in China, Southwest Jiaotong University, Jilin Railway Technology College, Far Eastern State Transport University in Russia, Kazakh Academy of Transport and Communication in Kazakhstan, and Ho Chi Minh City University of Transport in Vietnam among others. Our co-operative agreements will enhance the level of global railroad education and provide a valuable learning platform for our students.

Our College of Railroad & Logistics has been nominated as the "Railroad Specialized Graduate School (including for master's and doctorate courses)" by the MOLIT in July 2013. Once again in July 2015, we were selected for the "government support for specialized profession" project, and boosted our international presence. Our railroad management professionals have been brought forward for operation and maintenance (O&M) and overseas railway development opportunities.

The College of Railroad & Logistics will follow in the footsteps of Woosong University's vision of GPS: Globalization, Partnership, and Specialization. We promise to foster worldwide railroad professionals and lead them towards the worldwide platform.

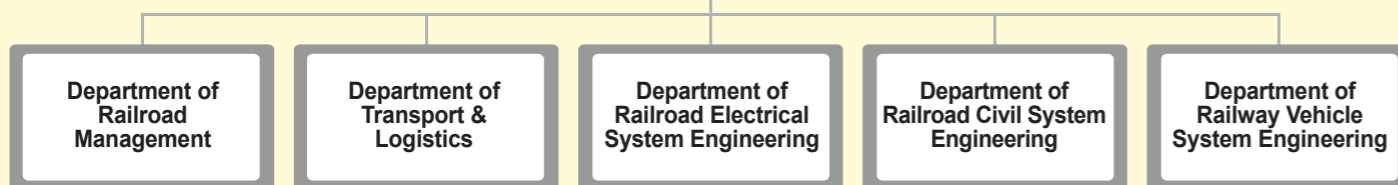
Dr. John E. Endicott
President
Woosong University



Woosong University College of Railroad & Logistics



College of Railroad & Logistics



- History -

- 2004. 3 Opened Department of Railroad Civil System Engineering
- 2004. 7 Selected as the only university for the NURI project in railroad field (by Department of Railroad Civil System Engineering)
- 2005. 3 Established Department of Railroad Electrical System Engineering and Department of Railroad Management
- 2007. 3 Opened Department of Railway Vehicle System Engineering
- 2008. 3 Chair Professor Jong-Hwan, Chung Department of Railroad Civil System Engineering was appointed as the Minister of Land, Infrastructure and Transport (MOLIT) in Korea. Opened Master's course for Graduate School of Railroad
- 2009. 3 Opened Department of Transport & Logistics
- 2010. 3 Opened Woosong Djet Railroad Academy (Accredited by Ministry of Land, Infrastructure and Transport (MOLIT) in Aug. 2009)
- 2011. 3 Opened doctorate course in Railroad
- 2012. 3 Established Graduate School for Green Railroad (Joint operation of Master's course with Korea Rail Network Authority)
- 2012. 4 Selected by Ministry of Education for Leaders in Industry-University Co-operation (LINC) project
- 2013. 1 Professor Chan-Mook Jung of Department of Railroad Civil System Engineering was appointed as the Dean for the College of Railroad & Logistics
- 2013. 7 Selected by Ministry of Land, Infrastructure and Transport (MOLIT) for Railroad specialized Graduate School (including master's and doctorate programs)
- 2015. 5 CK-1 award for special professions by the Ministry of Education
- 2015. 7 Selected by Ministry of Land, Infrastructure and Transport (MOLIT) for Railroad Operation and Maintenance (O&M)
- 2015. 9 Adjunct Professor Joon-II Cha of Department of Railroad Management was appointed as CEO of Daejeon Metropolitan Express Transit Corporation



Department of Railroad Management

<http://biz.wsu.ac.kr>

The **Department of Railroad Management** is offering the hands-on railroad experience type of curriculum based on industrial-educational cooperative agreement with Korea Railroad Corporation, Korea Rail Network Authority and rail industry related enterprises with the objective to cultivate tailored specialized manpower for railroad industry (Passenger/cargo, marketing, transport/on-board cabin affairs and administrative works areas) while operating field practices and internship at the industrial-educational cooperative institutions. Prerequisite courses required before obtaining locomotive engineer license (Railroad Safety Act, Railroad Operation Emergency Measures, Electric Train, Railroad Operation Theory, Urban Railroad System) are included in the curriculum. Currently master of business administration course (MBA) and doctorate course (DBA) are operating in addition to undergraduate course.

Overseas Sisterhood Relationship

- ▶ Implemented 2+2 dual degree program in coordination with Soochow University of China
- ▶ Training for major subjects at Distribution Economy University of Japan (1 year)
- ▶ Training for major subjects at Foreign Language University in Beijing (1 year)
- ▶ Implemented 3+1 degree program with Hochiminh Economy University of Vietnam
- ▶ Training for English language and major subjects at Wright State University of the U. S.

Career after Graduation

- ▶ Korail and 5 subsidiaries of Korail: Positions for office works, station service, transport service and computer service
- ▶ Korea Rail Network Authority: Positions for office works and computer service
- ▶ Railroad Operation Companies in 6 Metropolitan Cities (Seoul, Busan, Daegu, Incheon, Gwangju and Daejeon: Positions for office works, station service and transport service
- ▶ Local governments and their railroad related organizations: Government officials for special position, professional position and contractual positions
- ▶ Railroad related enterprises including Hyundai ROTEM, Woorin Industrial Systems, Hankuk Fiber: Positions for office works and computer service
- ▶ R&D areas such as Korea Railroad Research Institute and Graduate School for further study
- ▶ Employment after obtaining locomotive engineer license through locomotive engineer license education
- ▶ Employment at other listed enterprises

Pertinent Qualification Licenses

- ▶ 2nd class electric train driving license
- ▶ Railroad transport industrial engineer
- ▶ Distribution administrator
- ▶ Computer based accounting
- ▶ ERP
- ▶ Trade English
- ▶ International trade specialist





Department of Transport & Logistics

<http://trans.wsu.ac.kr>

The **Department of Transport & Logistics** offers the study on the merits and demerits of various transportations such as railroad, road and marine transport and also on theoretical as well as practical study on efficient linkup transportation among transportations through the concept of combined transport. From the viewpoint of transportations theoretical and practical domains on the rationalization and optimization of logistics transport are the objects of study.

■ Direction of the Operation of the Department

- ▶ With the objective to cultivate the best level of professional manpower for transport and logistics field in the country, Computer Application, English and 2nd foreign language (Chinese or Japanese) are included in the curriculum in addition to major subjects. Graduation certification system is introduced for the subjects of Computer, English and 2nd Foreign Language with the requirement to complete by the end of 3rd grade.
- ▶ Internationalized Department
In addition to the internship at domestic relevant enterprises, 3+1 System was introduced in coordination with the universities in Japan (Distribution Economy University, Gansai University) and China (Nanjing Xiaojiang University, Soochow University) to foster the Department internationally

■ Career after Graduation

- ▶ Through deep insights and understanding on transportations as well

as theoretical and practical knowledge on logistics, further study at the graduate school or employment at transportation company or logistics company is encouraged.

- ▶ Major employment possibility areas are railroad related institutions such as Korea Railroad Corporation, Metropolitan Rapid Transits and Korail Logis and logistics companies such as Hanjin (General transport business), Rotem (Hyundai, Railroad vehicles), Hyundai Marine Insurance, LogisALL.

■ Pertinent Qualification Licenses

- ▶ 2nd class of Logistics Administrator and Distribution Administrator
- ▶ Computer based accounting, ERP and trade English



Department of Railroad Electrical System Engineering

<http://railsignal.wsu.ac.kr>

The **Department of Railroad Electrical System Engineering** has not only reinforced practical education through theoretical education, experiment and practices but also established and is operating diversified education system including the development of one skill per person, tailored manpower cultivation and corporate customized education courses.

The Department also cultivates basic and professional knowledge on electricity and signal control fields which play core role in the pursuit of high-speed and automation of railroad and build up capability for field works to cultivate back-bone engineers.

Currently master of engineering course and doctor of engineering course are operated in addition to undergraduate course.

- ▶ Electric Railroad field
- ▶ Railroad Signal field
- ▶ Railroad Communication field
- ▶ Railroad Vehicle Driving field
- ▶ Middle School Teaching Profession field
- ▶ Railroad Safety field

■ Career after Graduation

- ▶ Government Officials – Officials of central government or Daejeon local government
- ▶ National Enterprises - Korea Rail Network Authority, Korea Railroad Corporation, Seoul Metro, Korea Electrical Safety Corporation
- ▶ Locomotive engineers for railroad train

▶ Teachers at middle and high schools

▶ Private railroad operation institutions – Airport railroad, light railway transit and magnetic levitation train operating companies

▶ Railroad electricity field – Design company, supervision company, construction company and material manufacturing company

▶ Information Communication field – Circuit design application company, electronic parts company, computer and peripheral equipment manufacturers and communication service providers

▶ Graduate School & Research Institute – Domestic and overseas graduate schools, Electronics and Telecommunications Research Institute and Korea Railroad Research Institute

■ Pertinent Qualification Licenses

- ▶ Engineer
 - Electrical engineer, Electrical work engineer
 - Electrical train engineer, Railroad signal engineer
 - Information communication engineer
- ▶ Railroad train driving license
- ▶ Middle school teaching license
- ▶ Professional railroad safety(Basic level)





Department of Railroad Civil System Engineering

<http://civil.wsu.ac.kr>

The **Department of Railroad Civil System Engineering** offers the study on the knowledge necessary for planning, designing, constructing and maintaining SOC infrastructure, essentially required to manage modern civilization and welfare of mankind, for example roads, dam, harbor, railroad, waterworks and sewerage. Especially, in order to cultivate professional railroad manpower required for the establishment of eco-friendly transportation of railroad facilities with priority, the Department is operating a specialized professional railroad education course through industrial-educational cooperation with railroad related institutions such as Korea Rail Network Authority and Korea Railroad Corporation.

Currently master of engineering course and doctor of engineering course are being operated in addition to undergraduate course.

- ▶ Railroad Planning field
- ▶ Railroad Design field
- ▶ Railroad Track bed field
- ▶ Railroad Construction field
- ▶ Railroad Maintenance field

■ Career after Graduation

- ▶ Government Officials: Government officials in civil engineering and environmental engineering for Daejeon City, Daejeon Metropolitan Express Transit Corporation, Central Government and local governments
- ▶ Government-run Enterprises: Korea Rail Network Authority, Korea

Railroad Corporation, Korea Expressway Corporation, Korea Water Resources Corporation, Korea Land & Housing Corporation

- ▶ Enterprises: Construction company, design company and supervision company
- ▶ Graduate School and Research Institute: Domestic and overseas graduate schools, and relevant research institutes such as Korea Institute of Construction Technology and Korea Railroad Research Institute

■ Pertinent Qualification Licenses

- ▶ Engineer
Railroad repair & maintenance engineer, civil engineer, construction material test engineer, concrete engineer, survey & topographical space information engineer and others
- ▶ Professional Engineer
Professional railroad engineer, professional civil structure engineer, professional civil construction engineer, professional soil and foundation engineer, professional civil quality test engineer and others



Department of Railway Vehicle System Engineering

<http://rail.wsu.ac.kr>

The **Department of Railway Vehicle System Engineering** offers the intensive study on railroad vehicles, 21C eco-friendly low carbon transportation and its related systems. Especially railroad is a transportation which enable mankind to take new choice for the solution for the issue of global warming and thus its importance is increasing day by day. On the occasion of the age of railroad renaissance, each country is accelerating the development of railroad industry and railroad vehicle is positioned in the center of railroad industry. Not only high-speed railroad which increases its speed day by day but also new concepts and technology such as magnetic levitation train and light rail transit were introduced and therefore the demand for railroad vehicle engineers is rapidly increasing. We are going to cultivate next generation railroad manpower who will lead the competency of our country to launch global market with Korean model of high speed railway which was developed independently by Korean technology as the 4th development in the world.

Currently master of engineering course and doctor of engineering course are being operated in addition to undergraduate course.

- ▶ General field Railroad vehicle
- ▶ Railroad vehicle driving/control field
- ▶ Railroad safety field
- ▶ Railroad system field
- ▶ Other machinery/control field

■ Career after Graduation

- ▶ Government Officials and Government-run corporations
Korea Railroad Corporation, Korea Rail Network Authority and urban

railroad operating institutions (Seoul, Busan, Daegu, Incheon, Gwangju and Daejeon)

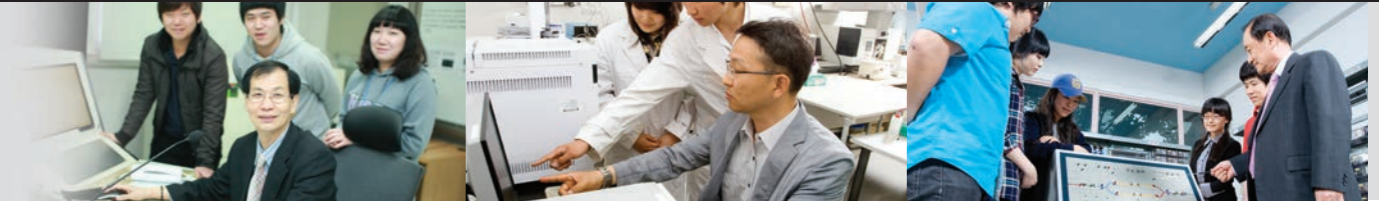
- ▶ Light rail transit operating institutions in each city: Driving, control, vehicle maintenance and repairing, vehicle design and other fields
- ▶ Railroad related Enterprises
Large enterprises and small and medium enterprises which manufacture railroad vehicles and parts including Hyundai Rotem and Woojin Industrial Systems
- ▶ Research Institute
Research institutes of large and small and medium enterprises including Korea Railroad Research Institute, Korea Institute of Machinery and Materials, Agency for Defense Development and Hyundai Rotem
- ▶ Others
Advancement to graduate schools and study abroad (Sisterhood universities in the U.S., Japan, China and Russia)

■ Pertinent Qualification Licenses

Railroad vehicle engineer, railroad vehicle driving license, railroad control engineer, railroad signal engineer, machinery engineer, mechanical design engineer, mechatronics engineer and others



The Professorate of College of Railroad & Logistics



Department of Railroad Management

Name	Position	University	Graduate School / Final Education	Specialty Field
Lee, Jin-Sun	Dept. Head	Ewha Univ.	US Washington Univ.D. Eng.	Railroad Traffic Planning
Kim, Hong-Gi	Full-time Prof.	Korea Univ.	German Gischen Univ.DBA	Marketing Studies
Lee, Yong-Sang	Full-time Prof.	Joong Ang Univ.	Japan Tsukuba Univ.D. Policy Study	Traffic Economics
Kim, Moon-Hong	Full-time Prof.	HUFS	HUFS.DBA	BA
Jho, Won-Gwon	Full-time Prof.	SNU	US Texas A&M Univ.D. Economics	Traffic Economics
Kim, Se-Ho	Chair-Prof.	Korea Univ.	SNU.M.PA	Railroad Management
Son, Hyung-Jong	Visiting Prof.	National Open Univ.	Inha Univ.M.BA	Railroad Management
Jang, Woo-Jin	Visiting Prof.	Hongik Univ.	Japan Ginki Univ.D.Traffic Economics	(Traffic Economics/BA)
Shin, Mi-Kyung	Visiting Prof.	HUFS	Chungnam Univ.D. Lit.	English Studies
Kim, Seung-Rae	Adjunct Prof.	Kangwon Univ.	In-house Distribution Graduate School.M. Mktg	Distribution Marketing
Kim, Chil-Hwan	Visiting Prof.	Korea National Open University	Ajou university, M. Transportation Systems Engineering	Railroad Managemen
Bae, Ho-Young	Visiting Prof.	Kyungpook National University	Yeungnam University, D. B.A.	Management& Finance

Department of Railway Vehicle System Engineering

Name	Position	University	Graduate School / Final Education	Specialty Field
Gang, Boo-Byung	Dept.Head	Imperial Univ.	Imperial Univ.D. Eng.	Railway Vehicle
Kim, Joo-Yong	Full-time Prof.	Korea Univ.	Korea Univ.D. Eng.	Railway Vehicle
Chang, Dae-Seong	Visiting Prof.	Inha Univ.	Soongsil Univ.D. Eng.	Railway Vehicle
Kim, Gyung-Rae	Visiting Prof.	National Open Univ.	-	Driving/Control
Kim, Man-Woong	Visiting Prof.	National Open Univ.	SNU of S&T.D.BA	Driving/Control
Oh, Mi-Ho	Djet Academy Prof.	Railroad Univ.	-	Driving/Control
Kim, Gyu-Joong	Adjunct Prof.	SKK Univ.	SNU of S&T.D.BA	Railroad Vehicle
Kim, Gyeong-Jin	Djet Academy Prof.	National Open Univ.	-	Driving/Control
Kim, Han-Yeong	Djet Academy Prof.	Konkuk Univ.	SNU of S&T.D.BA	Driving/Control
Kim, Yun-Jin	Djet Academy Prof.	National Open Univ.	-	Driving/Control

Department of Transport & Logistics

Name	Position	University	Graduate School / Final Education	Specialty Field
Kim, Hyung-Tae	Dept.Head	HanYang Univ.	Georgia Institute of Technology	Management Science
Chung, Byung-Hyun	Full-time Prof.	HanYang Univ.	Japan Gansai Univ.D. BA.	Railroad Logistics
Gwon, An-Sik	Visiting Prof.	SNU	Myongji Univ. D. Eng.	Logistics Management
Kim, Ki-Hong	Visiting Prof.	Korea Univ.	Yongji Univ. D. Eng.	Storage and Cargo Handling
Goo, Gyo-Hoon	Adjunct Prof.	Hongik Univ.	Sogang Univ.MBA	International Logistics

Department of Railroad Electrical System Engineering

Name	Position	University	Graduate School / Final Education	Specialty Field
Park, Jae-Young	Dept.Head	SNU of S&T	SNU of S&T / D.Eng.	Railroad signal
Loh, Young-Hwan	Full-time Prof.	Kyungpook Univ.	US Texas A&M Univ. / D.Eng.	Electrical engineering
Kim, Seong-Cheol	Full-time Prof.	Korea Univ.	Korea Univ. / D.Eng.	Communication engineering
Seo, Gi-Beom	Full-time Prof.	Hanyang Univ.	Hanyang Univ. / D.Eng.	Electronic engineering
Song, In-Geun	Full-time Prof.	Korea Univ.	Myongji Univ. / D.Eng.	Electronic engineering
Surender Reddy Salkuti	Full-time Prof.	Jawaharlal Nehru Technological University	Indian Institute of Technology	Electrical Engineering
Lee, keun-weon	Visiting Prof.	SNU of S&T	Hongik Univ., M.Eng.	Electric Railroad
Ryou, Sung-Kyun	Adjunct Prof.	SNU of S&T	Woosong Univ. D.Eng.	Railroad Signal
Yoo, Hae-Chool	Adjunct Prof.	Sehan Univ.	Hongik Univ.D. Eng.	Electric Railroad
Lee, Sang-Yong	Adjunct Prof.	Seogwang Univ.	US Texas A&M Univ. / D.Eng.	Electrical engineering
Lee, Seong-Geun	Adjunct Prof.	Univ. of Seoul	Hanyang Univ. / D.Eng.	Electrical engineering
Lee, Jae-Hoon	Adjunct Prof.	National Open Univ.	Kwanwoon Univ.D. Eng.	Electrical engineering
Hyun, Myung-Kul	Adjunct Prof.	Myongji Univ.	Myongji Univ. M. Eng.	Electric Magnetism
Choi, June-Young	Adjunct Prof.	Hongik Univ.	Woosong Univ. D.Eng.	Railway Safety
Yoon, Hak-Seon	Adjunct Prof.	SNU of S&T	Gwangwoon Univ. / D.Eng.	Train Control
Kim, Jeong-Gyum	Adjunct Prof.	Hanbat Univ.	-	Railroad signal

Department of Railroad Civil System Engineering

Name	Position	University	Graduate School / Final Education	Specialty Field
Jung, Chan-Mook	Dean of College of Railroad & Logistics	SNU	US Lehigh Univ.D. Eng.	Railroad Planning and Bridge Engineering
Oa, Seong-Wook	Dept. Head	Korea Univ.	Korea Univ.D. Eng.	Environmental Engineering
Lee, Tae-Gyu	Full-time Prof.	Yonsei Univ.	KIAST D. Eng.	Concrete Engineering
Park, Sang-Jin	Full-time Prof.	Korea Univ.	Korea Univ.D. Eng.	Environmental Engineering
Ahn, Tae-Bong	Full-time Prof.	Hanyang Univ.	US Arizona Univ.D. Eng.	Soil Engineering
Hong, Yong-Ki	Full-time Prof.	Hanyang Univ.	SNU of S&T.D. Eng.	Railroad System Engineering
Kim, Nam-Seok	Full-time Prof.	SNU	-	International Contracts
Phill Hadikin	Full-time Prof.	Univ. of Victoria	Univ.of British Columbia M. Humanities	English Major
Lee, Yun-Hee	Visiting Prof.	Woosong Univ.	New Mexico State University	Environmental Eng. English Major
Kang, Gi-Dong	Adjunct Prof.	Konkuk Univ.	Konkuk Univ.D. Eng.	Railroad Engineering
Noh, Byung-Gook	Adjunct Prof.	Konkuk Univ.	SNU of S&T.D. Eng.	Railroad Planning
Lee, Seong-Wook	Adjunct Prof.	SNU of S&T	Hanyang Univ.D. Eng.	Railroad Engineering
Lee, Woo-Tae	Adjunct Prof.	Woosong Univ.	Woosong Univ.M. Eng.	Railroad Engineering
Hwang, Byung-kuk	Adjunct Prof.	Korea Univ.	Kongju Univ.D. Eng.	Structure Engineering
Lee, Jae-Young	Adjunct Prof.	Sunchon Univ.	Hanyang Univ.M. Eng.	Construction Management
Um, Jae-Goo	Adjunct Prof.	Chungbuk Univ.	Chungbuk Univ.D. Eng.	Survey, CAD
Park, Dae-Geun	Adjunct Prof.	Pukyong Univ.	Korea Univ.D. Eng.	Railroad Engineering

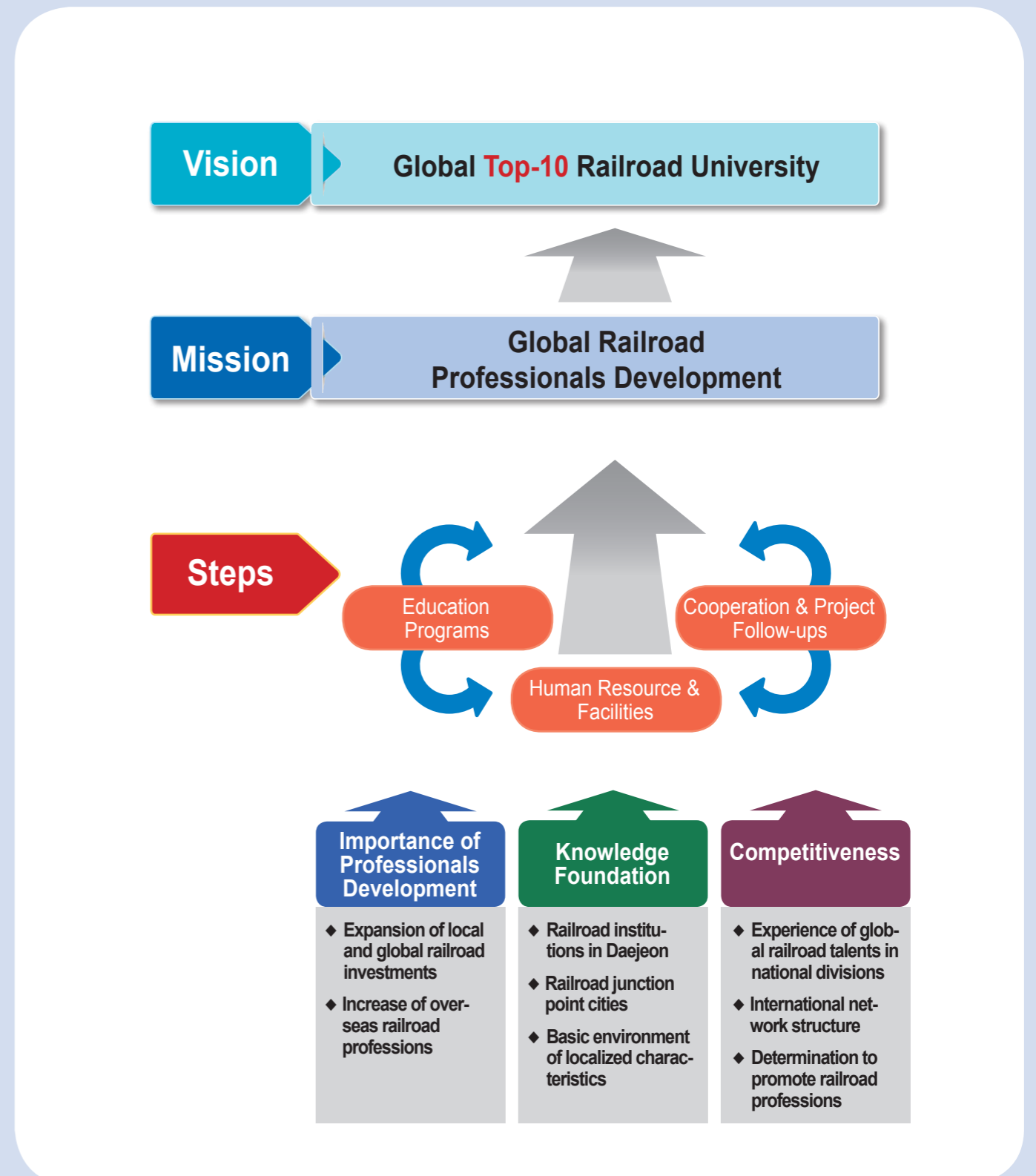
Government Sponsored Railroad Professionals Cultivation Project

The College of Railroad & Logistics at Woosong University is well-known for its outstanding programs, with excellent faculty and practical R&D facilities. The cutting edge education program fulfills the resource requirements in the fields and propels Woosong University's world standards for railroad institutions. We are constantly cooperating with local and global corporations in the railroad industry to foster sound relationships and formulate various programs to serve international railroad professionals through national human resources development project by the Ministry of Land, Infrastructure and Transport and the Ministry of Education.



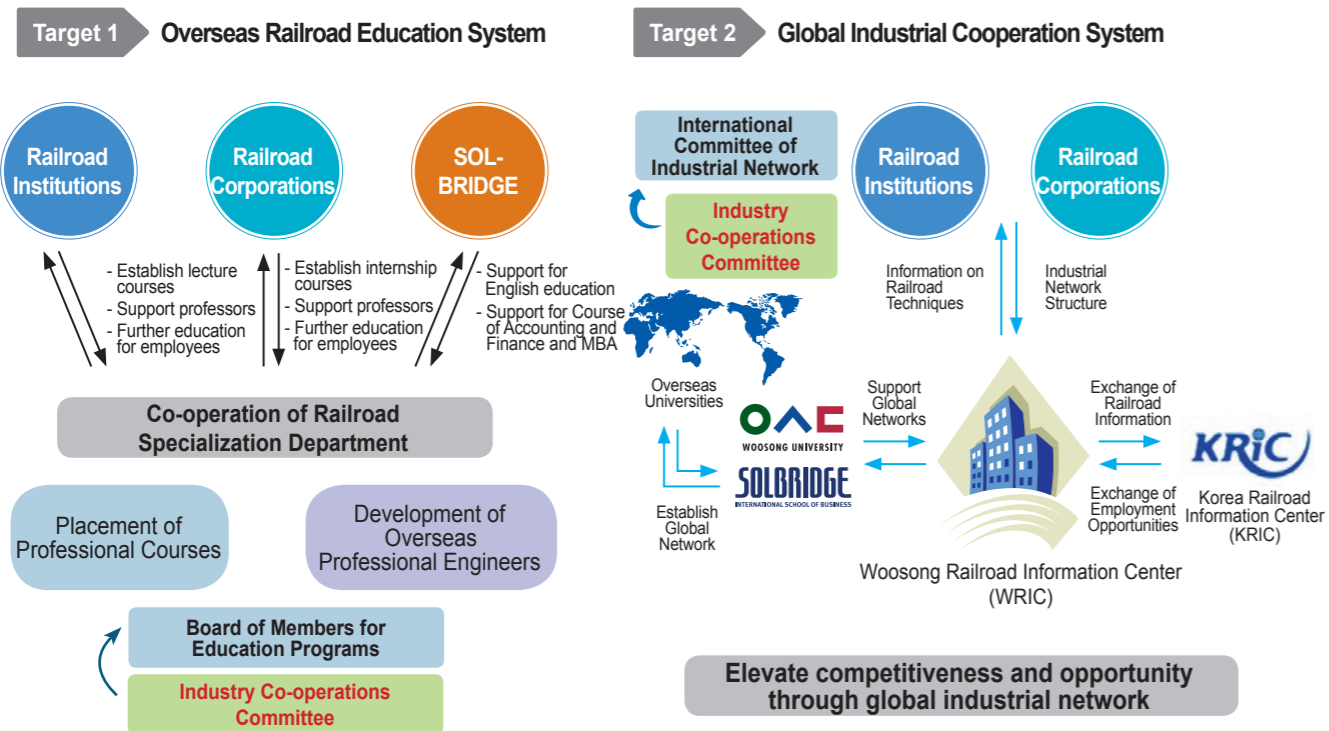
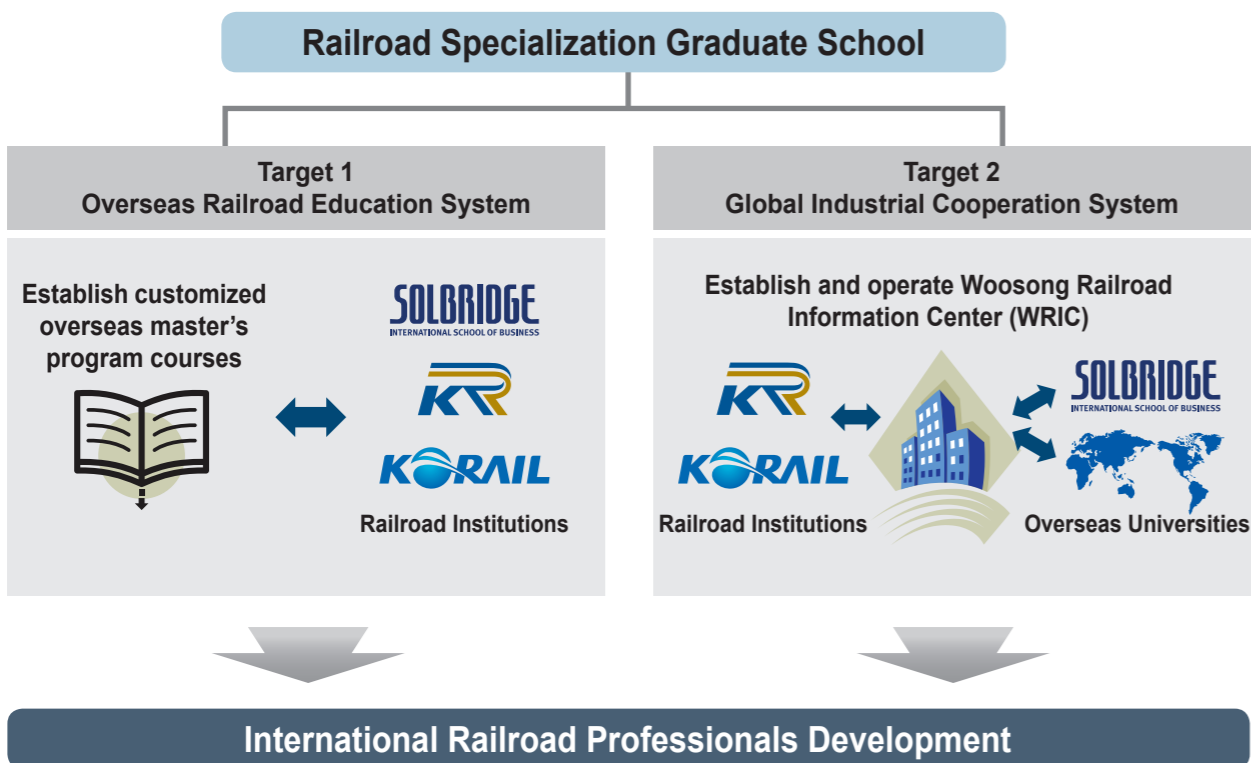
Government Sponsored Railroad Professionals Cultivation Project

The government sponsored railroad professionals cultivation project initiates from the undergraduate course to the master's or doctorate courses to cultivate railroad professionals to represent worldwide standards, supported by the Ministry of Land, Infrastructure and Transport in Korea. The undergraduate course selected as specialization school of the operations & maintenance (O&M) is operated by curriculum and programs jointed with Department of Railway Vehicle System Engineering, Department of Railroad Electrical System Engineering, and Department of IT Convergence/Integration. The master's and doctorate programs focus on cultivating the railroad professionals by targeting the incumbent to engage in the railroad organizations and industries to lead the international railroad markets.



Railroad Specialization Graduate School

Our railroad specialization Graduate School targets the fostering of global professionals (Master and Ph.D.) specialized in railroad field, together with the support from Ministry of Land, Infrastructure and Transport.



Railroad Specialization Graduate School

The goal of the railroad specialization graduate school is to nurture top professionals with Master and Ph.D. level and prepare them with extensive experience to compete in the global market in railroads and to develop the railroad industry which play a key role of future transportation infrastructure. We offer excellent teaching faculties, customized education programs, international seminars and forums, field studies and a wide range of overseas training courses.

English Lectures

Railroad Engineering Programs

- 100% lectures in English
- English syllabus
- Top-class faculty from various well-known overseas universities
- Foreign professors
- Education on railroad system engineering
- Education of railroad integration, (infrastructure, signal communication, Railway vehicles)

Global Railroad Seminars / Forums / Training Programs

- Special workshop
- Visiting Railroad infrastructure Corporation in Beijing
- International seminar at Soochow University in China
- Global professionals development forum – Paraguay
- MOU with Tribhuvan University in Nepal
- International seminar with Jilin Railway Vocational and Technical College in China

Railroad Specialization University

Enhancement of Employment

The College of Railroad & Logistics aims to elevate the employment opportunities for students. Several famous railroad professionals assist with the training of railroad knowledge and techniques. We also offer English taught programs with the cooperation from Woosong IT center and Railroad English Honors classes in order to provide a prosperous learning and career development platform.



Railroad Specialization University

Field study and Employment Supports Program

Overseas Training



Tokyo International Railroad Technology Exhibition



Railroad Testing Center at University of Tokyo

Local Field study



KTX depot in Goyang, Korea



Light rail transit depot in Uijeongbu, Korea

Employment Support System

- Students' Career Development Center
 - Career Management Section (GPS)
 - Employment Education

Partnership Industries and Family Businesses

- Execute partnership with industries
- Co-functions with family businesses
- Increase internship opportunities within family businesses

Recruitment Support for Students

Specialized Internships and Professional Certification Courses

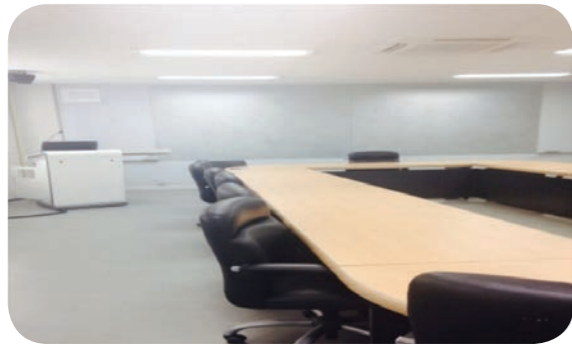
- Active participation in field study and internships
- Support students to obtain relative railroad safety and implementation certificates
- Set up classes for professional certifications and examinations

Increase Global Competitiveness

- International industry co-operations
- Develop academies for overseas employment opportunities with Hyundai Corporations

Railroad Specialization University

Top-Notch Facilities and Equipment



Seminar Room



Tracks Laboratory



Electronic Interlocking System



Signal Equipments



Relay Machines



Turnout & Wheels

International Co-operations

The College of Railroad & Logistics at Woosong University cultivates global leaders in the railroad industry. Several co-operative events have been held with world-famous schools for railway, such as Soochow University and Jilin Railway Vocational and Technical College in China, Far Eastern State Transportation University in Russia, Ho Chi Minh University of Transport in Vietnam and National Transport University in Kazakhstan.



April 2008 – Soochow University, China



October 2004 – Far Eastern State Transportation University, Russia



October 2015 – Jilin Railway Vocational and Technical College, China



May 2005 – National Transportation University, Kazakhstan



February 2014 – Tribhuvan University, Nepal



April 2008 – Ho Chi Minh University of Transport, Vietnam

Woosong Djet Railroad Academy

Accredited by the Ministry of Land, Infrastructure and Transport

Woosong Djet Railroad Academy was established as an affiliated institution of Woosong University under the objective of cultivating professional railroad manpower and was accredited by the Ministry of Land, Infrastructure and Transport in August, 2009 as a Railroad Controller cultivation and education institution in August, 2010. It was domestically the 3rd accreditation after Korail and Seoul Metro but the 1st accreditation among universities. Every year, the Academy is offering education for 2nd class electric vehicle locomotive engineers (120 persons) and 60 controllers every year.

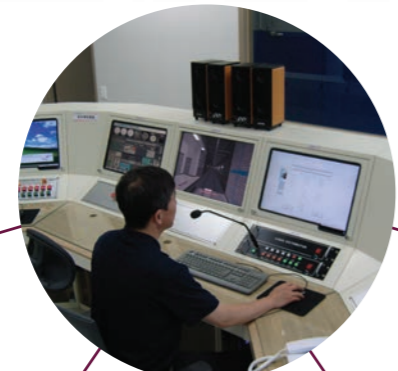


Education and training institution specialized for railroad vehicle driving license designated by the Ministry of Land, Infrastructure and Transport on Aug. 31, 2009

Education and training institution specialized for urban railroad controller designated by the Ministry of Land, Transport and Maritime Affairs on Oct. 8, 2010



Full type simulator with all driving function(FTS)




Teaching control panel




Personal type simulator with basic driving function(PTS)



Computer aided education system (CAI)



Audio-visual Room



Urban railroad controller cultivation and education system

Government · Industrial · Educational Cooperation Network

The College of Railroad & Logistics of Woosong University has established very solid cooperation network with the diversified public institutions and private enterprises of railroad field including Korea Rail Network Authority and Korea Railroad Corporation.





Woosong University
College of Railroad & Logistics



The Korea Railway Association